

Midweek Connection for Nov. 27,
2019

[View this email in your browser](#)



Midweek Connection at MCN

Nov. 27, 2019

Worship with us this Sunday, Dec. 1

Scripture: John 15:9-17

Sermon: Joy, the Sign of God's Presence

A reminder about announcements on Sundays: Send or give your announcements that you want publicly shared during Community Life to the pastor.

From our Transition Pastor, Gary Martin

"I am looking forward to our journey together, which begins with a sermon on Epiphany Sunday, Jan. 5. My priority for the first six weeks, is to visit as many households as possible. Details about that process, and how to sign up for a visit, will be provided next week."

Office and Transition Staff Hours and Contact Info

Church Office Hours: Weekdays (except Wednesdays) 9 am - 4 pm

Jim Bortell, Interim Minister (through December); jimbortell@gmail.com or 309.830.5897. Jim is available at the church office at 11 am - 12 pm most weekdays, except Wednesdays.

Ron Ropp, Minister of Visitation (ongoing); rjroppbarn@gmail.com or 309.212.2456. Ron is available for hospital visits, as needed.

Laurie Vial, Office Manager; church@normalmennonite.org or 309.452.6622. Office Hours are 9 am-4 pm every week day, except Wednesdays when Laurie works remotely.

Lauren Satchwell, Youth Ministry Leader; satchwell.lauren@gmail.com or 309.830.6827.



This Week at MCN

Sunday, Dec. 1

9 am Pre-service Prayer

9:30 am Worship

10:45 am Christian Ed for Children

10:45 am Blood Pressure Checks

11 am Christian Ed for Adults

6 pm Junior Choir

6:45 pm Youth Choir

7:30 pm Adult Choir

Tuesday, Dec. 3

9:30 am Staff Meeting

Wednesday, Dec. 4

6 pm Cello Recital

Thursday, Dec. 5

6:15 am Next Man Bible Study



From Nov. 24, 2019

--Lynette Miller asks for prayers for their daughter and son-in-law, Elizabeth and Neil, who are in Columbia with the Mennonite Central Committee. Demonstrations occurred this past week and violence broke out and the borders were closed. They are responsible for their team. Lynette asked for prayers as the couple makes important decisions.

--Glenn Wilson said Janet and her sister were able to move their mom successfully to a memory care facility in Cleveland, OH on Saturday. He thanked the congregation for their prayers.

--Beth Reeser thanked everyone for all expressions of concern - especially all the meals following her back surgery. She said she is doing better than expected.

--A special joy is the baptism of Adam Reiman and welcoming new members Jeff and Amy Reiman, Stephanie Nester and Ben and Caroline Roeschley.

Visits to Our Members in Nursing Homes

Please remember in your prayers, or with cards or a visit, the following members in nursing homes:

Ruth Marquis - Heritage Health

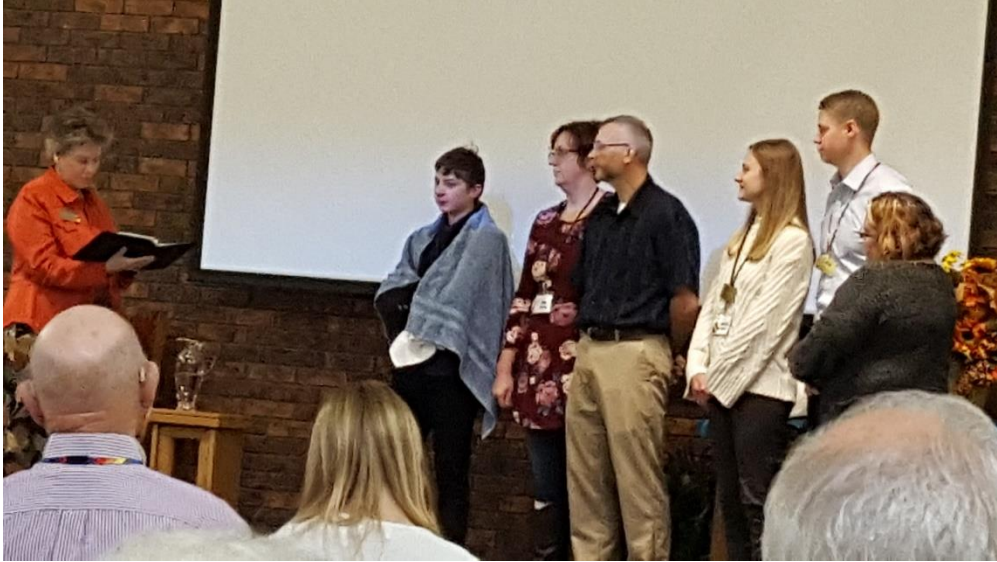
Lloyd Combs - Martin Health Care

Deborah Spacek - Evergreen

Jo Ropp - McLean County Nursing Home (Ron would appreciate mentioning visits to him.)
Roy Jiles - Evergreen

MCN would also like to develop a list of those who are "shut-ins" in their home. Please contact the church office to add them to this list so we can pray for them and uplift them in other ways.

Scenes from Pastor Jane's farewell:





With Grateful Thanks

Dear Congregation,

I depart with a full and grateful heart from the tremendous occasion on Sunday of worship and luncheon farewell. Thank you, thank you for the many gestures of thoughtfulness from you - the lovely reception, the memories and words of appreciation, the gorgeous quilt and the generous love gift. It was a very special day in my life which I will long remember. You truly fulfilled the goal of giving your pastor a "good goodbye."

I also wanted to let you know that while Mark will continue worshiping at MCN, I'll be going to the First United Methodist Church over on Fell Street. They have a 9:30 worship service, so Mark and I can maintain our Sunday morning routine of coming to B/N together, with me dropping him off here at MCN, and then heading over to campus. I feel grateful for that option during the time I remain away for the coming year.

Again, heartfelt thanks for such a wonderful send-off on Sunday!

With love, Jane



An Evening with ISU Strings

Hear several students of the ISU Strings, and MCN cellist, Lydia Hedberg, perform on Dec. 4 at 7 p.m. in the MCN sanctuary. Free admission. Donations are welcome to cover the rental fee for the evening.

BACHS - An Evening of Christmas Music

Hear the Bloomington Area Choir for Home Schoolers, and MCN vocalist, Charlotte Hedberg, perform their Choir Christmas Concert on Dec. 13 at 7 p.m.: The concert features the BACHS' Treble, Cantate and Concert Choirs at Christ Church in Normal. Free admission. Donations are welcome for this not-for-profit organization.

ILLINOIS STATE UNIVERSITY

Wonsook Kim College of Fine Arts
School of Music

*Presenting a celebration of the season with
Illinois State University Choirs & Symphony Orchestra
Featuring Steven Fox, Guest Conductor and Madrigal Singers*



Music for the Holidays

Saturday, December 7 at 3:00 p.m. & 7:00 p.m.

Sunday, December 8 at 3:00 p.m.

Center for the Performing Arts Concert Hall

Cost: \$15 General Admission, \$12 Faculty/Staff, \$10 Students/Seniors

GROUP RATE AVAILABLE FOR GROUPS OF 20 OR MORE

Free Parking. Tickets available at (309) 438-2535 and [ticketmaster](#)

2019



WonsookKimFineArts.IllinoisState.edu

If you need special accommodations to participate in this event, please contact the box office at (309) 438-2535 or call toll-free 1-800-451-4200 to arrange the accommodations.

**Hear the ISU Choirs & Symphony Orchestra, and MCN cellist, Lydia Hedberg,
perform:**

Music for the Holidays
Saturday, Dec. 7 at 3 pm & 7 pm

Sunday, Dec. 8 at 3 pm
ISU Center for the Performing Arts



New Address

The Neely family has moved to a new address in El Paso with the same zip code - please note this in your directory 2843 Augusta Ct.



Surprise! Luncheons. Everyone's invited!

When: Dec. 15, immediately following CE

What happens: Hosts provide soup or sandwiches.

Guests take along a salad or side dish to share.

Everyone eats!

RSVP by Dec. 5: to Kristen Satchwell [kristen.satchwell@gmail.com, call or text 309-838-6319, or place completed form (please sign your name) in Kristen's church mailbox] with info:

Host: _____ guests in my/our home.

Guests: _____ of me/us.

I'm/We're in! Signed: _____

When is the surprise revealed? Sunday morning, Dec. 15, you will find an envelope in your church mailbox giving you the name and address of your host. They will be expecting you/guests, but their guests will only be revealed when you appear at the door! This is a wonderful way to fellowship with folks in our church family. All are welcome to be part of the fun!

Nov. 3 Congregational Meeting

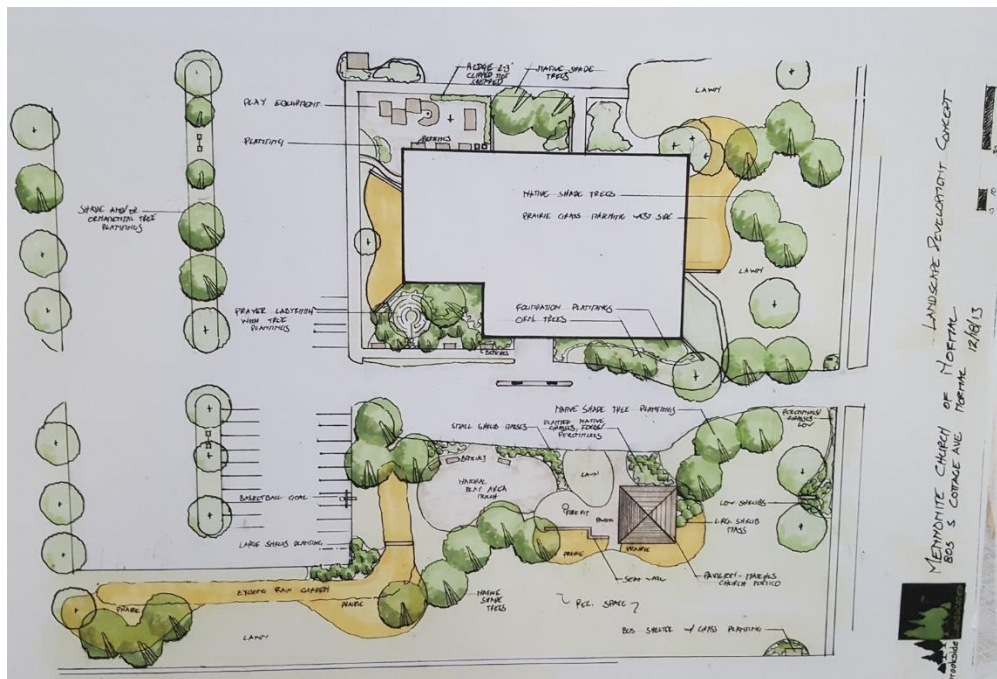
The Church Board has decided to share with the congregation all materials related to the Nov. 3 Congregational Meeting so church members and attenders do not have to wait until the Annual Meeting or Annual Report to see the minutes. The minutes, PowerPoint slides, proposed spending plan and all related materials are available by [clicking on this link](#).



Annual Reports are due to the office on Dec. 15.



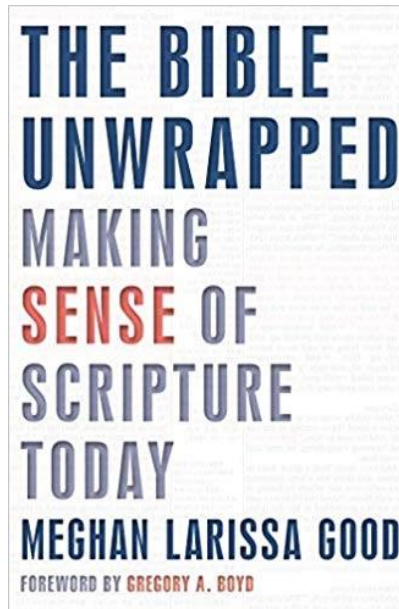
The Lost and Found area is overflowing. Please stop by and look at all the items and take home anything that belongs to your family. Thank you.



The MCN Campus Use Plan drawing will be on display for the next several weeks so everyone can study it.

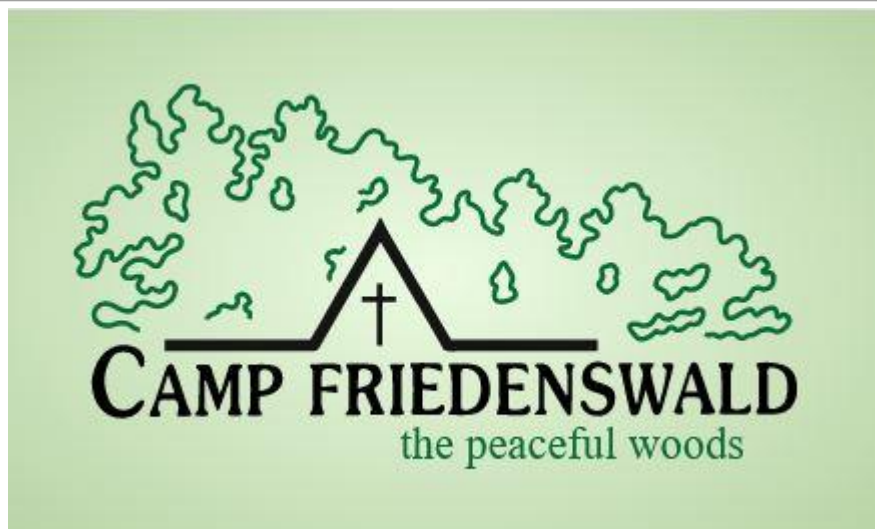
Mennonite Church of Normal was featured in the Sunday, Nov. 17 Pantagraph.

[Click here to read the story.](#)



New Adult Sunday School Class

A new Adult Sunday School Class will start Dec. 1 in Room 4. Randy Zehr will lead the class using the book, *The Bible Unwrapped Making Sense of Scripture Today* by Meghan Larissa Good. Attendees can purchase the book at the first class. If anyone owns the book and would be willing to lend it please let Randy know.



**Camp Friedenswald Winter Church Retreat will be Jan. 24 - 26.
Sign-up coming soon!**



Midwest Food Bank asks every one to STOP collecting for now.
If and when they need more they will announce
it on their Facebook page. Thanks.



**ALTERNATIVE
GIFT FAIR**

Alternative Gifts Fair

Thank you for so generously sharing your time, talents, and treasure to this fundraiser! This year, we collected \$15,728 (\$11,189 for MCC and \$4,539 for AGI). If you intended to contribute but did not have a chance, you can drop off a check made out to the church to Laurie in the office (during the week) or Erin Ponnou-Delaffon (on Sunday) any time through Dec. 1. Help yourself to extra shopping lists in Erin's mailbox if you need them. Thanks again!



Comforters for MCC: The Great Winter Warm-Up

MCC is celebrating a 100th Anniversary by collecting 6,500 comforters to deliver worldwide to people affected by disaster and conflict. There are two ways to participate: make and donate a comforter to be sent to MCC (instructions here https://mcc.org/sites/mcc.org/files/media/common/documents/2017-10-04_comforter_making_guideline_us.pdf) OR sponsor a comforter through an online donation (www.greatwinterwarmup.org). Some churches are hosting comforter-making parties, too.

Creation Care Confab

Periodic info and musings to help open conversations about God's amazing Creation

The trees in a forest are often interconnected by subterranean networks of mycorrhizae, fungal strands that inhabit tree roots. The mycorrhizal symbiosis enables the fungus to forage for mineral nutrients in the soil and deliver them to the tree in exchange for carbohydrates. The mycorrhizae may form fungal bridges between individual trees, so that all the trees in a forest are connected. These fungal networks appear to redistribute the wealth of carbohydrates from tree to tree. A kind of Robin Hood, they take from the rich and give to the poor so that all the trees arrive at the same carbon surplus at the same time. They weave a web of reciprocity, of giving and taking. In this way, the trees all act as one because the fungi have connected them. Through unity, survival. All flourishing is mutual. --Robin Wall Kimmerer

Green Thoughts

Jim Bortell writes and publishes a weekly electronic newsletter IGPMN (Illinois Grand Prairie Master Naturalists program) Green Thoughts. Here is a small part of this week's thoughts.

"IGPMN Green Thoughts -a winter thought and thoughts on ethical responsibility

WINTER

Winter is a pause in music, but during the pause the musicians are privately tuning their strings, to prepare for the coming outburst.

Alexander Smith

**

...ON ETHICAL RESPONSIBILITY—as individuals and as members of our local and world communities

**

“our little spaceship earth”

We travel together, passengers on a little spaceship, dependent on its vulnerable reserves of air and soil, all committed, for our safety, to its security and peace. Preserved from annihilation only by the care, the work and the love we give our fragile craft.

Adlai Stevenson 1900-1965/ U.N. Ambassador, a native of Bloomington, and one of democracy's most eloquent spokespersons."

To subscribe send Jim an email and ask him to add YOUR email to the list of subscribers. Jim's email is jimbortell@gmail.com. Put Green Thoughts in the subject line.

Archivist/Historian needed

MCN is in need of an archivist/historian. If you are a good fit for filling this important role in the church please let a Church Board member know.



Anniversaries

Carroll & Roberta Miller (60) Nov. 27

Birthdays

Miles Doblosky Nov. 29

Darvis King Dec. 1



Please Wear Your Nametag

**Please try to wear your nametag at MCN worship and events.
During this time of transition, nametags are especially important.**

Messiah Sing-A-Long

Illinois State University invites you to the Messiah Sing-A-Long, a fundraiser for Friends of the Arts in conjunction with the Wonsook Kim College of Fine Arts. Contact mmosier46@gmail.com with questions. Location is the Center for the Performing Arts, Sunday, Dec. 15 at 3 pm.

GIVE BACK

A Morning of Generosity



THRIVENT®

Thrivent Member Network
Heartland Region



Join us to help the under-resourced in McLean County. Hear exciting generosity updates from the Thrivent Member Network, take a tour of the facility and participate in a super sized service project with Midwest Food Bank.

Event Schedule:

8:30-9:00am | Registration and Light Breakfast

9:00-11:30am | Generosity Update, Food Bank Tour and Service Project

Event Details:

Saturday, December 7, 2019

8:30 a.m. - 11:30 a.m.

Midwest Food Bank

2031 Warehouse Road

Normal, IL

This event is open to volunteers age 5+ with a guardian.
Please register at MOGBN.Eventbrite.com.

WEAR A LIVE GENEROUSLY T-SHIRT and Thrivent will donate \$3 to Midwest Food Bank.
CONSIDER BRINGING AN ITEM from the "Most Wanted" list on the Eventbrite RSVP page.



Partners in Healing

MCN has been asked to pray for the Administration at Advocate BroMenn and Advocate Eureka Hospital in 2019. These executives make decisions each day of great importance to patient care. Both the staff who serve, and the patients and families needing those services very much appreciate your prayers.



Conference Newsletter

The Central District Conference Focus is now available in this online format. Just click the picture of the newsletter or the title. A copy is available on the Entrance Bulletin Board. Also available is the [CDC Reporter](#).



Office Hours, Deadline

To email Laurie (office manager) use church@normalmennonite.org.

Office Hours

Monday, Tuesday, Thursday 9-4 and Friday 9-12, 1-4.

Deadline for Midweek Connection and Bulletin is noon on Wednesday.

Voice of the Day

Violence is immoral because it thrives on hatred rather than love. It destroys community and makes brotherhood impossible. It leaves society in monologue rather than dialogue. Violence ends

up defeating itself. It creates bitterness in the survivors and brutality in the destroyers.
- Martin Luther King Jr.



Building Use

Saturday, Nov. 30

10 am Overeaters' Anonymous

Monday, Dec. 2

5:30 pm Al-Anon

Today's Chuckle

We took the kids to one of those restaurants where the walls are plastered with movie memorabilia. I went off to see the hostess about reserving a table. When I returned, I found my 10-year-old granddaughter Kaitlyn staring at a poster of Superman standing in a phone booth.

Kaitlyn looked puzzled. "She doesn't know who Superman is?" I whispered to Jenny.

"Worse," Jenny replied. "She doesn't know what a phone booth is."



Serving this week

South Greeters: Larry & Louise Reeser

West Greeter: Mark Alsene

Welcome Table: Mary Ann Watkins

Ushers: Andy & Beth Reeser, John & Kay Reimer

Sermon: Ron Ropp

Worship Leader: Lynette Miller

Song Leader: Wayne Hochstetler

Accompanist: Dorothy Loepp

Scripture Reader: Joe Jantze

Children's Time: Shelly King

Children's Song Leader: Melika Hershberger

Technology: Randy Zehr

Toddler Nursery: Nancy Fisher

Preschool Nursery: Beth Reeser